

CASE HISTORY 4/92 TO 8/94

AREA: Soil and Ground Water

SITE LOCATION: Kentucky

TARGET CONTAMINANTS: TPH, BTEX, PAH's

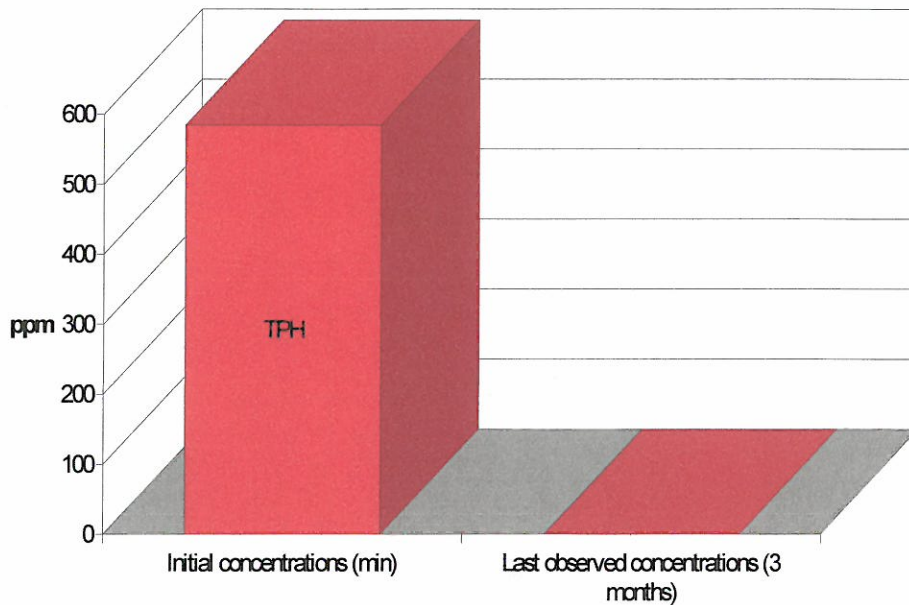
R&D: Yes

BENCH: No

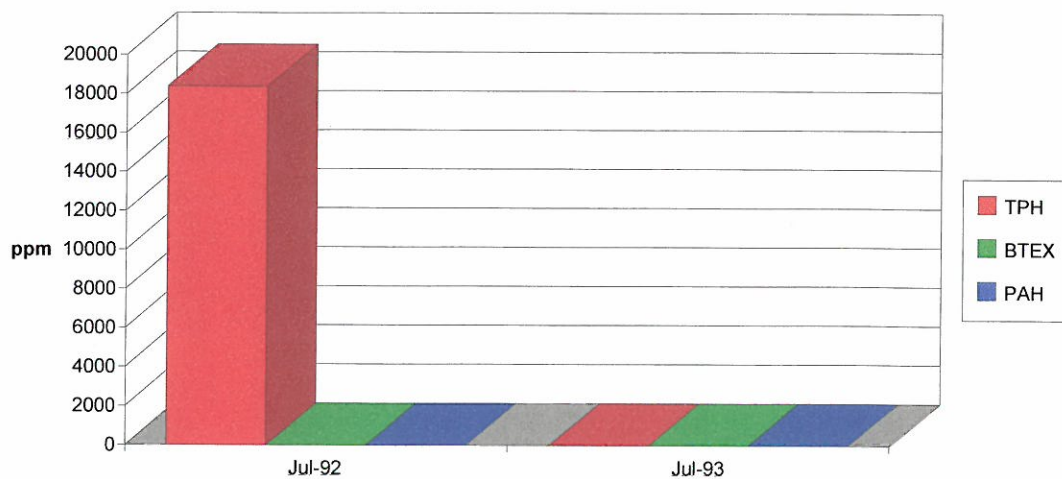
FIELD APPLICATION: Yes

Underground and above ground fuel and kerosene storage tanks were removed in the 1980's, but contaminated soils and ground water remained. The soil is packed clay and ground water fluctuates from 6" to 3'. 1,000 gallons of microbes were transported and injected into slit trenches above the old tanks. The trenches were then filled in.

This was the first in-site bioremediation for Kentucky and 2 years of monitoring were required. A closure report was filed in July, 1993 and July, 1994. The 1994 closure report was accepted and closure granted in September, 1994



GROUND WATER HYDROCARBONS



SOIL TPH

